

Quotes

1. Click on the right mouse button and choose **Open Single Quote** or enter the corresponding shortcut in the command line.
2. Choose the view you wish by clicking on one of the following tabs:



All Trading Places

1. Click on the right mouse button and choose **Open all Sources** or enter the corresponding shortcut in the command line.

Chaining

1. Click on the right mouse button and in the menu list choose **Open derivatives** or **Open structured products** choose the desired instrument type or enter the corresponding shortcut in the command line.
2. In **Context** choose additional filter options (Type, Market, Maturity, Deviation from Price Underlying).

Chart + Time Series

1. Click on the right mouse button and in the menu list choose the desired display type in **Open Chart + History** (day/year diagram, intra-day/history time series) or enter the corresponding shortcut in the command line.
2. Select the desired parameters in **Context**.

Tip: You can save your personal chart settings.

Limits

1. Click on the right mouse button and choose **Add Limit...** or enter the corresponding shortcut in the command line.
2. Fill in the **limit settings** window with the desired values.
3. Click on **OK**.

Tip: Set an alarm so that you are alerted by a pop-up window, an acoustic warning or an e-mail when the limits are reached.

Watchdog

1. Click on the right mouse button and choose **Add to Watchdog** or open Watchdog in the menu bar and then enter the relevant instrument in the command line (e.g. NOVN,VTX).

2. Activate or deactivate the desired message types.

Tip: You can simultaneously save all instruments in a Watchdog list. Use the sidebar to select a list, click the right mouse button and choose **Add to Watchdog**. You can also do the same with a Portfolio.

Contributors

1. Enter the corresponding shortcut in the command line (e.g. **85, bp11**).
2. Press the **Return** key or click on **Go**.

Tip: At Global Screen > Trading you will find predefined contributor pages.

Basic Data & Events

Click on the right mouse button and in the **Instrument Info** menu list choose the desired display type or enter the corresponding shortcut in the command line.

The following sections can be chosen from:

- Instrument summary
- Instrument details
- All Corporate Actions
- Markets
- NSINs
- Documents
- Dividends
- Custom Page

Tip 1: Click directly on to go straight to the reference data.

Tip 2: You can also display the company information relevant to any instrument (e.g. Yahoo! Finance).

Search functions

Quick Search

1. Enter a name in the command line, e.g. Nestle.
2. Enter one of the following search parameters in **Context**:
 - Quotes
 - Instrument
 - Company
 - Trading Place
 - News
3. Complete the search mask with the desired details.
4. Press enter or click on **Go**.

Extended Search

1. Click the "more Searches" pull-down menu to the right of the command line
2. Choose the search you want by clicking, for example, on equities, bonds, derivatives, corporate actions, issue calendar, etc.).
3. Complete the search mask with the desired details.
4. Press the enter key or click on **Search**.

Tip 1: In the "Status" selection field you can decide whether your search should include active, inactive or all instruments. You can also set this selection as "default" in your user preferences.

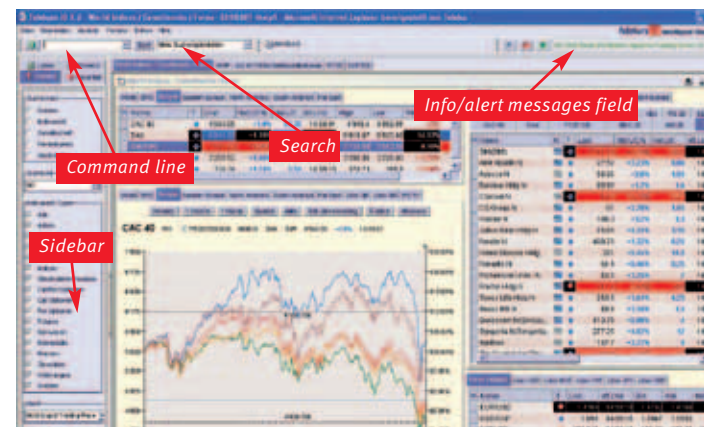
News

News Headlines

1. Enter the shortcut ".n" or ".news" in the command line.
2. If you wish to additionally filter the headlines, select the "Provider" and "Topics" in **Context**.
3. Click on "Search".

News Search

1. In the pull-down menu, click on News.
2. Enter one or more search criteria.
3. If desired, you can additionally filter with "Provider" and "Topics".
4. Press the **Return** key or click on **Search**.



Navigation

Telekurs iD offers multiple navigation possibilities:

- Entry field (e.g. command line)
- Drag & drop
- Double-clicking
- Clicking on the right mouse button

Tip 1: Rows can be marked in alternate colours (Display Preferences / Alternating Rows).

Tip 2: Change the colour of the quote updates in the user preferences (Display Preferences / Update Colour Scheme).

User preferences

1. In the **File** menu, click on the menu item **User Preferences...**
2. Change the parameters according to your needs.
3. Click on **Save**.

Tip 1: An e-mail address must, for example, be entered for the Limit Minder.

Tip 2: Choose your preferred language version (German, English, French, Italian).

Tip 3: Choose your preferred securities identification system (e.g. Swiss Valor no., WKN, ISIN).

Command line

Search entry


1. Enter the search criteria (**name, symbol, ISIN, NSIN**).
2. Press the **Return** key or click on **Go**.

Tip 1: If you enter the trading place, you will directly receive the desired instrument (e.g. **IBM, NYX**).

Tip 2: If you enter the NSIN with country code and comma (e.g. **CH1205604,**) the most liquid trading place is automatically accessed.

Shortcuts


1. Enter a short cut (e.g. **.SMI** opens the SMI Stocks list).
2. Press the **Return** key or click on **Go**.

Tip: For an overview of all shortcuts, click on .

Screens

Open Global Screens or Country Screens

1. Click on the **Screens** tab.
2. Select a screen in the sidebar.
3. Open the screen by double-clicking on it.

Tip: In a screen, you can hide the title bars of the windows or print the whole screen with .

Create screens

1. Go to “File” in the menu and choose “New screen”.
2. Compose a screen according to your own needs. To do this, you can choose lists in the sidebar or by using a shortcut (e.g. **.SMI**). You can also insert a chart window for any desired quote (see section on “Charts”). If you double-click on a new quote in your screen list, the Chart window is automatically updated.
3. Click in the **File** menu on the menu item **Save screen as...**
4. Enter the name you wish to use.
5. Press the **Return** key or click on **OK**.

Startup screens

You can define up to 8 startup screens:

1. Select a screen in the sidebar.
2. Click on the right mouse button and choose **Add to Startup Screens**.

Tip 1: In the tab **Favorites**, you can change the order of start-up screens with drag & drop.

Tip 2: The bottommost screen will be displayed as the active (visible) screen.

Tip 3: Screens can also be saved as Top Favorites.

Lists

Open predefined lists

1. Click on the tab **Lists**.
2. Double-click on the Country List or Global List folder.
3. Double-click any list.

Tip 1: Lists can also be opened with drag & drop: keeping the left mouse button pressed, drag a list from the sidebar into the display area.

Tip 2: Lists can also be opened via context menu (right mouse button) as a heatmap, multi-tab list or ticker.

Create User Lists

1. In the **File** menu, click on the menu item **New List**.
2. Add the instrument with drag & drop or by making an entry in the command line.
3. In the **File** menu click on the menu item **Save List as...**
4. Enter the name you wish to use.
5. Press the **Return** key or click on **OK**.

Sort Lists

1. Double-click on the desired column header, e.g. Net Change %.
2. Double-click again to re-sort the list in the reverse order.

Create Styles

1. Click on the column heading with the right mouse button, e.g. last.
2. Click on **Add Field...**
3. Search a data field or use the filter to choose a data group and then a data field.
4. Right mouse-click **Add** or **Add after...**
5. When you have added all the fields you wish, click on **Close**.

Tip: Go to “Filter” and select the option “relevant fields only” to obtain precisely the information you need for the instrument type concerned.

Assign Styles

1. In the sidebar click on the **Context** tab.
2. Select the desired style by double-clicking on it or by dragging & dropping it into the list or by clicking on **Open** in the selection menu using the right mouse button.

Tip: Under **Styles** you will find several appropriate Styles for the Global Lists.

Context

Context shows each of the possible setting options for a specific function and is adapted correspondingly. Context always relates to the section in the display area marked with a red border. Context in a list is a Style (column headings).

Call up Context

1. In the sidebar click on the **Context** tab.
2. For each function select the parameters according to your own preferences.

Favorites

You can save lists and screens under Favorites.

Create Favorites

1. Select a list or screen in the sidebar.
2. Click on the right mouse button and choose **Add to Favorites**.
3. Under **Favorite Properties** enter the information you wish.
4. Press the **Return** key or click on **OK**.

Top Favorites

If you save favorites in the **Top Bar** folder, these will be displayed in the Top Favorites symbol bar and can be opened from there with a click.

Tip: You can also use drag & drop to move favorites straight into the top bar.

Export - Import

Export (static)

1. In the **File** menu click on **Export**.
2. Enter the file names in the **Export** pop up window.
3. Press the **Return** key or click on **OK**.

Tip: For this function, a corresponding path must always be defined in the user preferences (Export/Import path).

Export (dynamic)

1. In the **Edit** menu click on **DDE**.
2. You can transfer the data to your application (e.g. Excel) with the function “Paste”.

Tip: This function can also be called up using the right mouse button.

Export (ISIN/NSIN)

1. In the **File** menu – **Export** – **ISIN/NSIN** click on the desired selection.
2. Enter the file name you want in the **Export** window.
3. Press the **Return** key or click on **OK**.

Tip: A text file (.txt) with the format “NSIN,stock exchange” can be inserted in lists using the import function.

Portfolio

1. In the **File** menu click on **New Portfolio**.
2. Select the desired portfolio currency.
3. Press the **Return** key or click on **OK**.
4. Add instruments using drag & drop or by making an entry in the command line.
5. Enter the portfolio details.
6. Click on **OK**.

Bond and Option Calculators

1. Click the right mouse button and, depending on the instrument type, choose either **Bond Calculator** or **Option Calculator**.
2. By entering figures in the appropriate scroll-down fields, you can now make various calculations and simulations for options and bonds.

Additional Information


For the latest information about Telekurs **iD** and Telekurs Financial:

– Click on the blue Telekurs Info button .

– Go to www.telekursid.com or www.telekurs-financial.com

Help

In the menu **Help** you can find the following information: Contents (help), What is this?, User Manual (PDF), Short-Cut Overview, Tables, About, Entitlements

Tip: “What is this?” allows you to click directly in the viewer by using . The chapter of the respective screen will then appear automatically.



| Country | Phone no. | Country | Phone no. |
|-------------|-------------------|----------------|-------------------|
| Switzerland | +41 44 279 51 11 | Luxembourg | +352 261 16 1 |
| Austria | +43 1 532 45 71 0 | Monaco | +377 97 97 71 61 |
| Belgium | +32 2 7900 500 | Morocco | +212 522 27 64 10 |
| Canada | +1 416 915 41 21 | Netherlands | +31 20 3012 888 |
| Denmark | +45 33 41 11 11 | Norway AS | +47 23 32 66 20 |
| Finland | +358 207 33 40 43 | Scotland | +44 131 718 6006 |
| France | +33 1 53 00 0100 | Singapore | +65 6338 3808 |
| Germany | +49 69 717 00 0 | Spain | +34 91 577 55 00 |
| Hong Kong | +852 2971 0388 | Sweden | +46 8 58 61 6300 |
| Ireland | +353 1 213 0722 | United Kingdom | +44 20 7550 5000 |
| Italy | +39 02 76 45 631 | USA | +1 203 353 8100 |
| Japan | +81 3 3808 2271 | | |