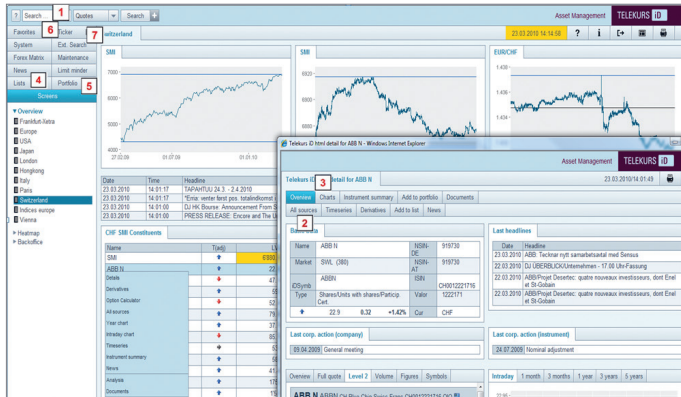


Telekurs iD html Quick Reference Guide



Navigation

The following navigation options are possible in Telekurs iD:

- Entry in a text entry field (e.g. for a quick search)
- Single click with the left mouse button for links and detailed information

Maintenance/User settings

1. In the selection area click on the Maintenance tab.
2. Select one of the following:
 - Favorite maintenance
 - Ticker maintenance
 - Portfolio maintenance
 - Style maintenance
 - General settings
 - Quick search maintenance
 - Extended search settings
 - Autoupdate settings
3. Change the parameters according to your needs and save them.

Search area (quick search) 1

Search entries

1. In the search area, choose one of the following options:
 - Quotes
 - Listings
 - News
 - Instrument
 - Company
 - Trading place
 - Event
 - Underlying

2. Enter a search text (name, symbol, ISIN, NSIN, etc.).
 3. Make any necessary search restrictions – according to the option chosen.
 4. Press the Enter key or click on Search.
- Tip:** Clicking the ? button in the search area opens the online help function for the corresponding search option (Quotes, Instrument, etc.).

Shortcuts

1. Enter a shortcut in the entry field.
 2. Press the Enter key or click on Search.
- Shortcut examples: BMW,ETR = Instrument details window for BMW (stock exchange Xetra)
 IBM,NYX,C = Chart for IBM at the New York Stock Exchange
 .DAX = List of DAX Index stocks with prices.
- Tip 1:** An overview of the possible shortcuts can be found in the help pages or in the user handbook.
- Tip 2:** If you enter a comma after the search text (symbol, NSIN, etc.), you will automatically receive the most liquid stock exchange (example: IBM,) and with just one keystroke the instrument details window will be opened directly.

Search functions (extended search)

1. In the selection area click on the Extended Search tab.
2. Select one of the following options:
 - Equity Search
 - Company
 - Bond Search
 - Derivative Search
 - Structured Product
 - Funds Search
 - Corp. Action Search
 - New Instruments
 - New Listing Search
 - Market Search
 - Issue calendar
 - National currencies
 - Special messages
3. Complete the search mask with the desired search criteria.
4. Click on the Search button.

Overview

1. Open the instrument details window either by clicking on an instrument in a list and then selecting Details, or directly using a shortcut (e.g. IBM,NYX).
2. Choose the view you wish by clicking on one of the following tabs: Overview, Full quote, Level 2, Volume, Figures, Symbols.
3. Choose the chart time period you wish by clicking on one of the following tabs: Intraday, 1 week, 1 month, 3 months, YtD, 1 year, 5 years, Max.

All sources 2

Open the instrument details window either by clicking on an instrument in a list and then selecting All sources, or directly using a shortcut (e.g. IBM, NYX,X). On the left-hand side of your screen you can set filter parameters such as stock exchanges, currencies and groupings.

Charts 3

1. Open the historical or intraday charts either by clicking on an instrument in a list and then selecting Year chart or Intraday chart, or directly using a shortcut (e.g. IBM,NYX,C or IBM,NYX,IC).
 2. Select the desired parameters on the left-hand side.
- Tip:** In the lower part of the window you have the option of comparing the historical performance of the selected instrument with another instrument.

Timeseries

Open historical (10-year) or intraday (10-day) time series or 5-minute (180-day) snapshots either by clicking on an instrument in a list and then selecting Timeseries, or directly using a shortcut (e.g. IBM,NYX,TS).

Instrument summary (reference data overview)

1. Open the window either by clicking on an instrument in a list and then selecting Instrument summary, or directly using a shortcut (e.g. IBM,NYX,IS).
2. Select the desired sub-topic from the reference data to receive direct access to the required information.

Derivatives

1. Open a list of derivatives either by clicking on the underlying in a list and then selecting Derivative, or directly using a shortcut (e.g. IBM, NYX,CO – for call options on the underlying IBM instrument on the New York Stock Exchange).
2. If required, you can filter the list in the upper part of the window using criteria specific to the type of instrument, such as strike price, maturity etc.

Analysis

1. Open the analysis data for an instrument by clicking on an instrument in a list and then selecting.
2. Choose the providers of fundamental data and future estimates from the tabs available.

Option Calculator

To open the Option Calculator, select either the relevant option or the underlying and choose Option Calculator from the drop-down menu. The Option Calculator opens and further parameters can be defined. Calculate starts a new calculation.

Screens

1. In the selection area click on the Screens tab.
 2. Select the desired market overview with a single click.
- Tip:** Clicking on 🖨 at the top right of the screen saves the current screen as the start screen.

Lists 4

Open predefined lists

1. In the selection area click on the Lists tab.
2. With a single click select one of the following folders: User, Customer, Country or TK.
3. Click on a list.

Create user lists

1. In the Lists selection area select User with a single click.
2. Select the Add list option.
3. Enter the name of the new list in the entry field and click on OK.
4. Click on the desired instrument in a list or search result and select Add to list.
5. Select the desired list in the pop-up window and click on the Insert button.

Tip 1: You can also enter the field names in the Search entry field and then press the Enter key.

Tip 2: In the Lists selection area you can also rename or delete user lists.

Sort lists by column


1. Click on the desired column header.
2. Click again to re-sort the list in the reverse order.

Assign styles

Styles defines the columns/additional information displayed in a list.

1. Above the list under Styles, choose between Search, List, User, Customer, Country and TK.
2. Select the desired style with a single click.
3. Use the Keep Style button to define the standard style for future lists.

Create styles

1. Under Maintenance in the selection area, open User settings and choose Style maintenance.
2. From the list field on the left, choose an additional field that you would like to add to this style and from the middle list field select the corresponding value to be displayed.
3. Click on the  button.
4. Click on the Save button to save the changed style.

Tip 1: You can also enter the field names in the Search entry field and then press the Enter key.

Tip 2: You can rearrange the fields using the  and  buttons.

Portfolio 5

Create portfolio

1. Under Maintenance in the selection area, select Portfolio maintenance.
2. Enter the name of the new portfolio in the Insert field.
3. In the Currency field, select the currency in which you wish to maintain the portfolio. The currency selected under General settings becomes the default value.
4. Click on the Insert button.
5. In a list or in a search result click on the desired instrument and choose To portfolio.
6. Select the desired portfolio from the pop-up menu, enter the additional data and click on the Insert button.

Tip: You can also add an instrument to a portfolio using the Portfolio tab in the details window.

Open portfolio

1. In the selection area click on the Portfolio tab.
2. Select the desired portfolio with a single click.

Tip: In the Maintenance selection field under Portfolio maintenance you can also rename or delete portfolios.

News

Headlines/Search

1. In the selection area click on the News tab.
2. Select any necessary additional filter options.
3. Press the Enter key or click on Search.

Linked news

Open news on a specific security by clicking on the desired instrument in a list and then clicking on News.

Limits

Create limits

1. Click on the desired instrument and select Add limit.
2. Enter the additional data in the pop-up menu and click on the Add limit button.

Tip: In the Maintenance selection field under General settings you can enter the e-mail addresses to be notified when limits are reached.

Open/modify limits


1. In the selection area click on the Limit minder tab.
2. To delete or modify a limit, select it with a single click.

Forex-Matrix

1. In the selection area click on Forex Matrix.
2. On the left-hand side you can select the currencies to be displayed in the matrix, and choose the style.
3. Use the Refresh button under the additional currencies to activate changes to the matrix.

Favorites 6

Create favorites

1. Open a list.
2. Click on the  button above the list.
3. Type the Name of your choice in the entry field.
4. Click on the Insert button.


Open favorites

1. In the selection area click on the Favorites tab.
2. Select the desired favorites with a single click.

Tip: In the Maintenance selection field under Favorite maintenance you may rename or delete favorites.

Ticker 7

Create ticker


1. Open a list.
2. Click on the  button.
3. Enter the Name of your choice in the entry field.
4. Click on the Insert button.

Open ticker

1. In the selection field click on the Ticker tab.
2. Select the desired ticker with a single click.

Tip: In the Maintenance selection field under Ticker maintenance you may rename or delete tickers.

Heatmap

1. Open a list.
2. Click on the  button.
3. When you run the cursor over an instrument, detailed information for this instrument will be displayed.


Tip: In the Screens selection field you can also open market views with an inserted heatmap.

Additional information

For the latest information about Telekurs iD html, Telekurs iD java and Telekurs Financial:

- Click on the Telekurs info button .
- Go to www.telekursid.com or www.six-telekurs.com.

Help

You can call up online help and the user handbook (in PDF format) using the  button.



Our helpdesks can be contacted on:

Country	Phone no.	Country	Phone no.
Switzerland	+41 44 279 55 55	Luxembourg	+352 261 16 1
Austria	+43 1 532 45 71 0	Monaco	+377 97 97 71 61
Belgium	+32 2 7900 500	Morocco	+212 522 27 64 10
Canada	+1 416 915 41 21	Netherlands	+31 20 3012 888
Denmark	+45 33 41 11 11	Norway AS	+47 23 32 66 20
Finland	+358 207 33 40 43	Scotland	+44 131 718 6006
France	+33 1 55 35 11 88	Singapore	+65 6338 3808
Germany	+49 69 717 00 0	Spain	+34 91 577 55 00
Hong Kong	+852 2971 0388	Sweden	+46 8 58 61 6300
Ireland	+353 1 213 0722	United Kingdom	+44 20 7550 5000
Italy	+39 02 76 45 631	USA	+1 203 353 8100
Japan	+81 3 3808 2271		